

ERP for an engineering office

Degree programme : Bachelor of Science in Holztechnik

Specialisation : Process and Product Management

Thesis advisor : Prof. Bernhard Letsch

Expert : Daniel Dietrich (Dietrich Isol AG)

Industrial partner : Eurban Limited, London

Eurban Limited, a UK engineering firm specialising in CLT construction, faces challenges with its outdated software landscape. This thesis examines whether an ERP system can optimise workflows, centralise data, and reduce reliance on key personnel. The evaluation identifies Procore as the ideal solution to enhance efficiency and support Eurban's sustainable growth.

Background

Eurban Limited is a UK-based engineering firm specialising in cross-laminated timber (CLT) construction. It currently operates with a complex, partly outdated software landscape that fails to support its expanding and diverse project demands. This bachelor's thesis examines the feasibility and potential benefits of implementing an Enterprise Resource Planning (ERP) system, aimed at optimising Eurban's workflows, centralising data management, and reducing the reliance on key personnel. The core research question investigates whether an ERP system could effectively address Eurban's unique operational challenges, improve efficiency, and support sustainable growth.

Methods

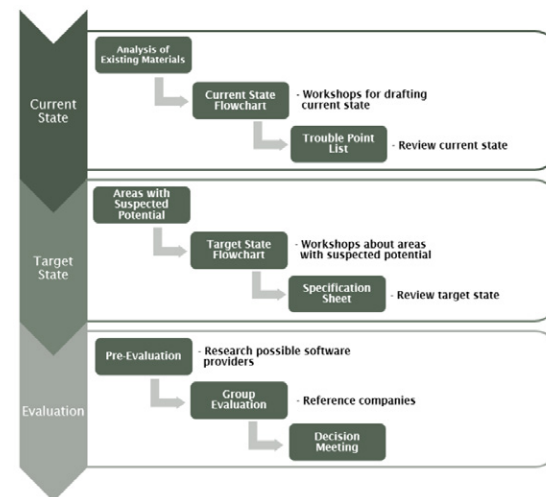
The methodology adopted a multi-phase evaluation framework, beginning with an in-depth analysis of Eurban's current processes. Data was gathered through internal workshops, document reviews, and workflow mapping; revealing over 40 significant 'trouble points', including redundant data entry, fragmented communication channels, and inefficiencies due to a dependence on individual expertise. The thorough process mapping provided a detailed understanding, serving as a foundational step toward designing an effective target state.

Results

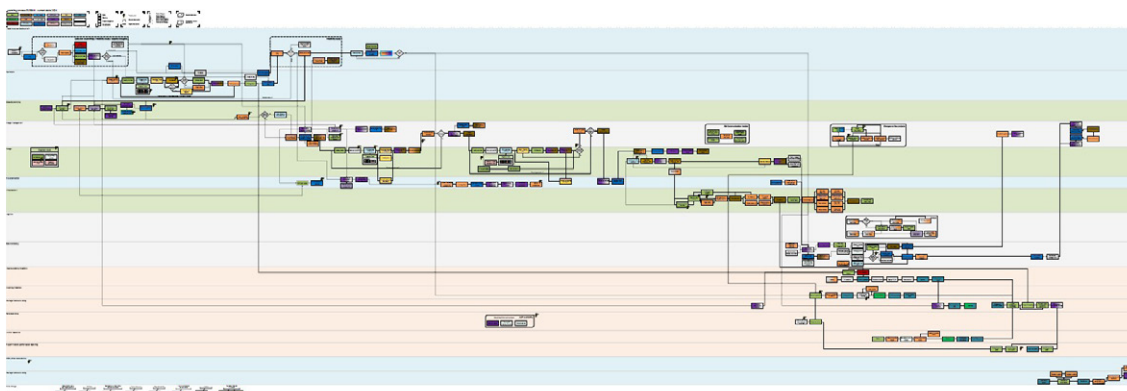
The evaluation process identified Procore as the most suitable ERP system to support the company's operations. Findings suggest that implementing Procore could significantly streamline Eurban's project management processes, enhance cross-departmental transparency, and offer a scalable solution for future growth. Conclusively, this study demonstrates the importance of tailored ERP solutions for complex engineering operations.



Tim Martin Keller
keller-tim@outlook.com



The process of working through the project



Target State Flowchart